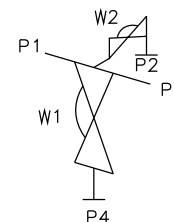


DN80 TO DN100 MAINLINE ONLY



ORIENTATION AS PER P&ID DIAGRAM FOR OPTIMUM DRAINABILITY.

The information on this sheet is Private and Confidential and is the property of Crane Process Flow Technologies Limited and must not be published directly or indirectly in any manner, whatsoever without the written permission of the Company and must not be used in any way detrimental to their interests.  
© Crane Process Flow Technologies

**CRANE** Process Flow Technologies  
A Crane Co. Company

**Saunders**  
The Science Inside

Title  
SCHEDULE OF LEADING DIMENSIONS FOR DN80 WEIR  
'T' BODY WITH DN8 BACK SAMPLE COMPLETE WITH :  
MAINLINE : BUTT WELD ISO 1127 S1 TUBE ENDS  
BRANCH : HYGIENIC CLAMP END WITH ISO 1127 S1 BORE  
SAMPLE : HYGIENIC CLAMP END WITH ISO 1127 S1 BORE

Drawn RI Date 25.05.12

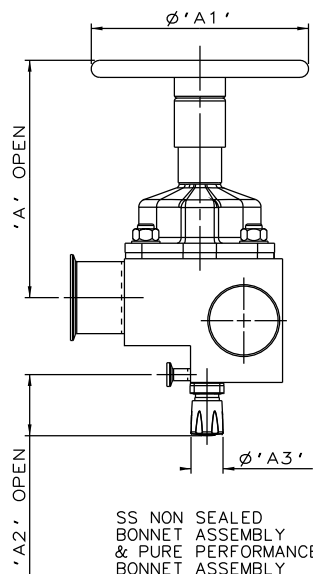
UNCONTROLLED IN HARD COPY FORMAT

Checked JRD Date 25.05.12

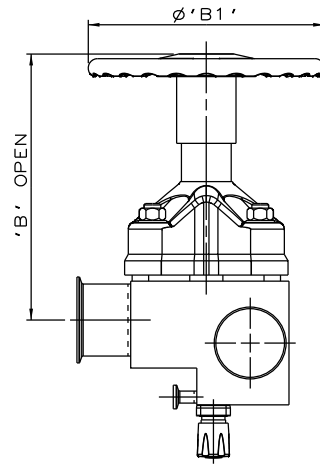
First Angle Projection Method E

Drawing No. WEB-229 Issue. 1

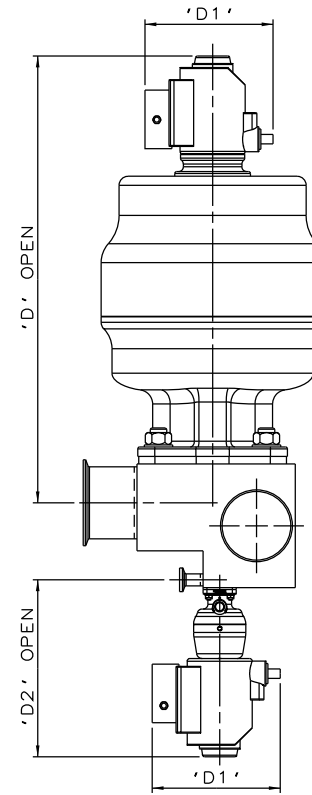
MAINLINE SIZE	A	B	C	øD	øE	F	G	H	I	BODY WEIGHT
mm	mm	mm	mm	mm	mm	mm	mm	mm	mm	Kgs
DN80	50.8	49.9	69.0	88.9	83.7	136.0	44.4	178.0	110.5	19.2
DN100	101.6	62.6	82.0	114.3	109.1	143.0	57.1	203.0	135.5	20.6



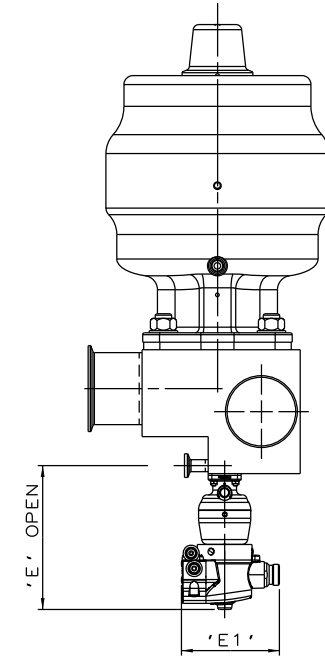
SS NON SEALED  
BONNET ASSEMBLY  
& PURE PERFORMANCE  
BONNET ASSEMBLY



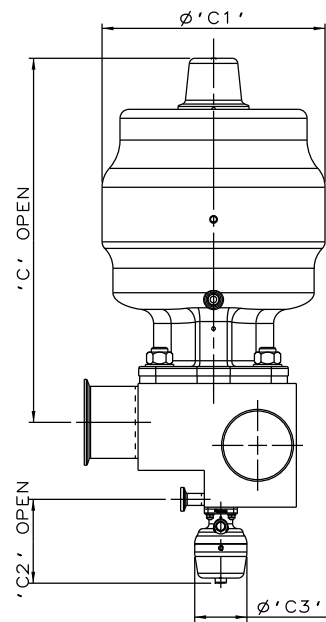
PES BONNET ASSEMBLY  
& PURE PERFORMANCE  
BONNET ASSEMBLY



\*S360 ACTUATORS  
WITH I-VUE SENSOR



\*S360 ACTUATORS  
WITH M-VUE SENSOR



\*S360 ACTUATORS

BLOCK CAN BE FITTED WITH ANY EXISTING  
SUITABLE TOP WORK COMBINATIONS

The information on this sheet is Private and Confidential and is the property of Crane Process Flow Technologies Limited and must not be published directly or indirectly in any manner whatsoever without the written permission of the Company and must not be used in any way detrimental to their interests.  
© Crane Process Flow Technologies

**CRANE** Process Flow Technologies  
A Crane Co. Company

**Saunders**  
The Science Inside

Title  
SCHEDULE OF LEADING DIMENSIONS FOR DN80/3.00  
WEIR 'T' BODY WITH DN8/0.25 BACK SAMPLE WITH MAINLINE  
BUTT WELD ISO 1127 S1 TUBE ENDS, BRANCH AND SAMPLE  
HYGIENIC CLAMP ENDS WITH ISO 1127 S1 BORE.  
FITTED WITH TOPWORKS OPTIONS

Drawn R1 Date 09.05.17 UNCONTROLLED IN  
Checked RND Date 09.05.17 HARD COPY FORMAT

First Angle Projection Method E DO NOT SCALE Drawing No. WEB-229-ASSY Issue. 1

\*DIMENSIONS SHOW MAXIMUM ENVELOPE FOR ALL MODES

BRANCH/SAMPLE SIZE		A		A1		A2		A3		B		B1		C		C1		C2		C3		D		D1		D2		E		E1	
mm	inch	mm	inch	mm	inch	mm	inch	mm	inch	mm	inch	mm	inch	mm	inch	mm	inch	mm	inch	mm	inch	mm	inch	mm	inch	mm	inch	mm	inch	mm	inch
DN80xDN15	3.0x0.5	258.4	10.17	230.0	9.06	65.2	2.57	34.0	1.34	298.4	11.75	250.0	9.84	406.4	16.00	236.0	9.29	88.8	3.50	55.0	2.18	479.4	18.87	136.0	5.35	187.8	7.39	153.8	6.06	103.8	4.09